

epos

EPOS-LOUDSPEAKERS.COM



EPOS

SOUND WITH HERITAGE AND VISION

Since Robin Marshall founded Epos in 1983, the name has stood for purist engineering, beautiful simplicity, and a belief that great loudspeakers should deliver music with nothing added and nothing taken away.

In 2020, Epos entered its most exciting chapter yet. Visionary designer Karl-Heinz Fink—founder of FinkTeam and one of Europe's most respected acoustic engineers—acquired the brand with a bold mission: honour the DNA of Epos while pushing its performance far beyond anything in its history. Like Marshall, Fink isn't interested in nostalgia for its own sake. His focus is on true innovation, powered by modern materials, advanced simulation tools, and decades of acoustic expertise.

That vision came to life at High End 2022 with the launch of the ES-14N. More than a re-imagining of a classic, it is the first loudspeaker of a new Epos era—a stand-mount monitor engineered from the ground up. Every detail has been reconsidered: a meticulously braced cabinet, bespoke drivers, and a crossover designed with the precision of a master craftsman. The result is a loudspeaker that captures the spirit of Epos while delivering a level of refinement, scale, and musicality that sets a new benchmark.

The ES-14N doesn't just continue the Epos story—it redefines it.



Fink Audio Consulting –
a Benchmark in Loudspeaker Development

Today, Epos operates under the umbrella of Fink Audio Consulting – one of Europe's leading firms in loudspeaker design. Its expertise in advanced development, measurement, and simulation is relied upon by numerous manufacturers across the industry. What many listeners never realise is that a surprising number of well-known loudspeakers quietly carry the influence of this consultancy, whose work often supports the R&D efforts of major brands behind the scenes.

When Karl-Heinz Fink began designing his own loudspeakers in 2014, the intention was simply to create high-quality internal reference monitors. The project, however, evolved into a broader commitment to developing complete loudspeaker systems.

After acquiring Epos Loudspeakers, the first task was to revive one of the brand's most iconic designs: the ES-14 two-way speaker. The modern interpretation, named ES-14N, retains the spirit of the original while introducing a larger, more classic cabinet and a dedicated matching stand.

Today, the Epos range includes the ES-14N, the compact ES-7N suitable for both free-standing and bookshelf use, and the ES-28N, a floorstanding model standing roughly one metre tall.



The original Epos ES-14 model from the 1980s



ES-7N

COMPACT TWO-WAY BOOKSHELF LOUDSPEAKER

At the request of many music enthusiasts, Karl-Heinz Fink developed the Epos ES-7N – a compact “baby Epos” that, with dimensions of just 290 x 200 x 270 mm (H x W x D), fits easily into even the smallest spaces. The front baffle houses a 130 mm mid/bass driver combined with a bass reflex port, as well as the 28 mm soft dome tweeter used across all current Epos models.

The mid/bass driver, which is crossed over below 2 kHz, features a mica-filled polypropylene cone manufactured using an injection-molding process. A 30 mm voice coil with a fiberglass/epoxy core and a dual magnet system ensures an exceptionally wide dynamic range for a driver and cabinet of this size.

To minimize unwanted resonances, the enclosure is constructed from two 8 mm MDF panels with a damping layer sandwiched between them. Four threaded inserts on the underside allow the ES-7N to be securely mounted on a dedicated 70 cm speaker stand. A set of silicone rubber isolation pads is included.

A particularly clever – and at first glance invisible – feature is located on the rear panel between the two binding posts: a toggle switch that lets you choose between two preset tonal balances. When the switch is in the upper position, the speaker is optimised for placement 30 to 50 cm away from the rear wall. The lower position is designed for setups close to a wall or inside a bookshelf.

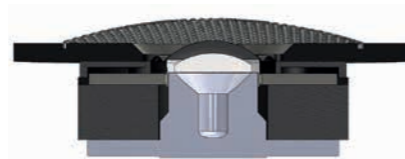
Instead of reducing bass output, the ES-7N achieves optimal tonal balance for shelf placement by subtly lifting the upper midrange and treble – resulting in a particularly smooth and slightly warmer sound character compared to free-standing placement.



A rear-mounted switch allows the ES-7N's tonal balance to be adjusted for either stand-mounted or bookshelf placement



Cutaway view of the ES-7N



Cutaway view of the tweeter dome

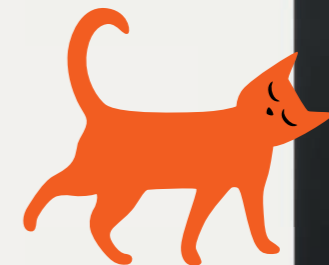


“THE SMALL EPOS IS A REAL HOT TIP FOR ANYONE WITH LIMITED SPACE.”

Quote from LP Magazine



The Epos ES-7N is available in walnut, satin orange, satin white, and satin black finishes.



ES-14N

TWO-WAY BOOKSHELF LOUDSPEAKER

To mark the relaunch of the Epos brand, the legendary ES-14 has been completely reimagined. This two-way loudspeaker now features a 28 mm tweeter dome and a 180 mm mid/bass driver. The cone is made from virtually indestructible, mica-filled polypropylene using an injection-molding process. The 36 mm voice coil features an 18 mm long dual-layer copper winding on a non-metallic fiberglass/epoxy former. To ensure minimal distortion and maximum linearity, a highly refined magnet system – developed through extensive simulation – is employed, representing a significant advance over the original bass driver design.

The tweeter, used across all Epos models, delivers a clear and detailed sound signature. Its ceramic-coated dome is powered by a 28 mm aluminium-alloy voice coil and a high-performance ferrite magnet. The absence of ferrofluid in the magnetic gap ensures thermal stability and reduced dynamic compression.

The enclosure is a dual-layer MDF construction and maintains nearly the same internal volume as the original ES-14, but in a completely redesigned form. The front baffle is angled backwards to optimise time alignment between the woofer and tweeter. The rearported bass reflex opening is designed to minimize airflow noise.

An optional stand is available, featuring a solid steel base plate with four height-adjustable spikes and a column made of layered solid wood slats. The speaker mounts to a dual-layer steel top plate, with a layer of bitumen between the plates to suppress unwanted resonance.



The cabinet features virtually no parallel walls and is heavily braced



The 28 mm tweeter dome used across all Epos models



Cutaway view of the mid/bass driver



“PERHAPS THE BEST A BOOK-SHELF SPEAKER CAN BE.”

Quote from LP Magazine



The Epos ES-14N is available in walnut, satin white and satin black finishes

ES-28N

THREE-WAY FLOORSTANDING LOUDSPEAKER

The new ES-28N is the largest current model in the Epos lineup. With its cabinet standing approximately one meter tall and equipped with two powerful 180 mm woofers, it can effortlessly deliver impressive sound pressure levels even in large rooms.

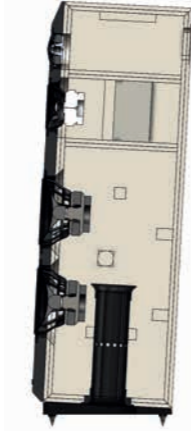
Like the ES-14N, the cabinet of the ES-28N is slightly angled to ensure precise time alignment of the drivers. The two woofers are housed in a bass reflex enclosure with a downward-firing port, carefully braced to eliminate unwanted cabinet resonances. To further minimize coloration, the entire cabinet is built as a sandwich construction: two layers of MDF bonded with a high-damping adhesive layer. The 50 mm front baffle is made from two 10 mm sandwich panels and a separate 30 mm MDF plate.

The 130 mm midrange driver operates in its own low-reflection sub-enclosure. Based on the ES-7N bass driver design, it features an injection-molded, mica-filled polypropylene cone and a 30 mm voice coil wound on a fiberglass/epoxy former.

The two 180 mm woofers in the ES-28N share the same magnet system and basket design as those in the ES-14N. However, instead of a curved cone, they use a flat cone. The voice coil diameter is 36 mm.

The ceramic-coated tweeter dome is powered by a 28 mm aluminium alloy voice coil and a high-performance ferrite magnet. By deliberately omitting ferrofluid in the gap, thermal stability and low compression are ensured.

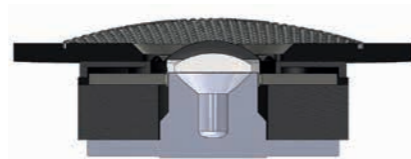
The crossover network is mounted in a dedicated chamber behind the tweeter, isolated from the high sound pressure levels generated by the midrange and bass drivers.



The cutaway view of the ES-28N reveals the three separate internal chambers and the downward-firing bass reflex port



Cutaway view of the woofer



Cutaway view of the tweeter dome



“... IMPRESSES WITH ENORMOUS HEADROOM AND A **THRILLINGLY AUTHENTIC SOUND.**”

Lowbeats.de on the ES-28N



The Epos ES-28N is available in walnut, satin jade green, satin white, and satin black finishes



ES-7N WHAT THE EXPERTS SAY



Lowbeats.de: "The ES-7N is more than just a wellmade compact speaker. Sonically, it comes close to perfection and will appeal to any music lover who appreciates a crisp and well-balanced presentation."

lite-magazin.de: "Whether placed on a sideboard, stands or in a bookshelf – this speaker brings music to life almost anywhere. The sound is consistently fresh and engaging. Particularly impressive are its fine resolution and truly captivating lower midrange agility."



lp-international.info: "A sign of greatness. Naturally, I won't even attempt to convince you that I've suddenly become a fan of cute little two-way loudspeakers. But: there is a 'but'."

HiFi News: "The ES-7N impresses with detail, roomfilling dynamics, and sheer fun. For its price, this entrylevel Epos model is hard to beat – whether used on stands or in a bookshelf."

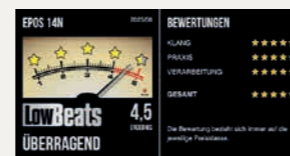


ES-14N WHAT THE EXPERTS SAY



av-forums.com: "The ES-14N is a modern loudspeaker and likely one of the most capable options available for under €5,000."

lowbeats.de: "The ES-14N is very likely one of – if not the – most coherent speakers in its class. In terms of naturalness, it can easily outperform many significantly more expensive competitors. A true talent – and not expensive considering what it offers."



Fidelity: "Just visit your trusted dealer and listen to the new Epos – combining FinkTeam's expertise at an accessible price. You won't regret it!"

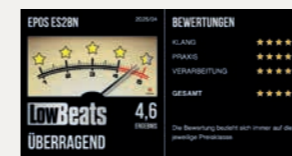


i-fidelity.net: "What Karl-Heinz Fink has achieved with the ES-14N deserves full recognition. Enjoying music at this level of sonic excellence is something no one would expect at this price point. No wonder the Epos has become the new reference speaker in our listening room."

lp-magazin.de: "He just has the knack for it, Karl Heinz Fink: As the newly minted owner of the quintessentially British heritage brand Epos, he faced the task of building a loudspeaker that was technically and sonically excellent while also preserving the deeply British tradition associated with the brand. He succeeded – brilliantly. The ES-14N has become a pleasantly uncritical loudspeaker to work with, offering a high degree of linearity and always sounding detailed and tidy."



ES-28N WHAT THE EXPERTS SAY



lowbeats.de: "When the Epos ES-28N plays, it immediately exudes something majestic. It sounds audiophile, harmonious, lively, and thrillingly authentic – and despite its deep bass, it remains impressively low in distortion, allowing for tremendous volume levels when paired with the right amplifier."

fidelity-online.de: "Breaking with tradition in style: Three ways, many ideas, no compromise."



HiFi News: "It's number three of three as the reborn Epos brand is topped off with an innovative three-way floor stander."

lp-international.info: "Simply spot-on. So little time, and yet so much lasting fame – that's Epos. Music lovers know the name, even though the brand was only active under its original founder for a few years, it's made a strong comeback – and it's better than ever."



TECHNICAL SPECIFICATIONS

	ES-7N	ES-14N	ES-28N
Frequency Response	48 – 28,000 Hz	40 – 23,000 Hz	<30 – 25,000 Hz
Impedance	4 Ω	> 6 Ω	> 6 Ω
Sensitivity (2,823 V / 1 m)	86 dB (free standing) 89 dB (near-wall)	87 dB	86 dB
Crossover Frequencies	2,000 Hz	2,700 Hz	330 Hz, 2,700 Hz
Woofer	130 mm (5") polypropylene	180 mm (7") polypropylene, 35 mm voice coil	2 x 180 mm (7") polypropylene, 36 mm voice coil
Midrange Driver	–	–	130 mm ø (5.25"), 30 mm ø voice coil
Tweeter	28 mm ø aluminium/ceramic dome, no ferrofluid	28 mm ø aluminium/ceramic dome, no ferrofluid	28 mm ø aluminium/ceramic dome, no ferrofluid
Dimensions (HxWxD in mm)	290 x 200 x 270	491 x 250 x 385	1,050 x 250 x 360
Weight	7.6 kg	16 kg	35 kg
Finishes Available	Walnut, satin orange, satin white, satin black	Walnut, satin white, satin black	Walnut, satin jade green, satin white, satin black
Recommended Stand height	70 cm	51.5 cm	–

epos
LOUDSPEAKERS

Karl-Heinz Fink
Maxstr. 75
45127 Essen
Germany

Phone: +40-201-236412
www.epos-loudspeakers.com

Photos: dirkhoffmann-fotografie.de
Layout & illustrations: superherodesign.de
May 2026